

Condor Duct Down air ingress & exhaust venting for internal bathrooms

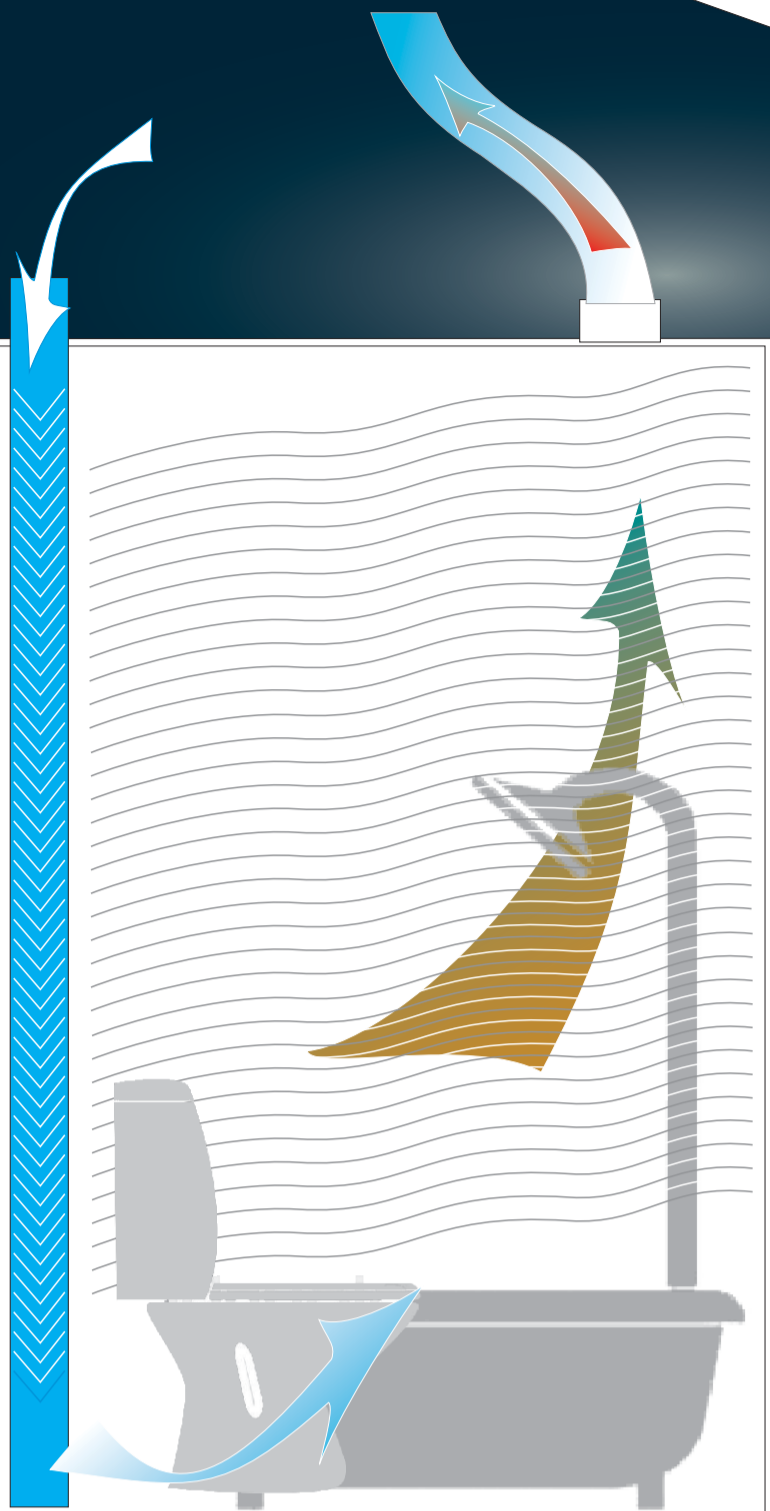
for efficient air washing of interior wet areas

Duct Down features

- ▶ Efficient volume replacement
- ▶ Reduced noise transmission
- ▶ No loss of air conditioned values
- ▶ No requirement of door vents
- ▶ Maintenance free
- ▶ Easy installation to room corner or wall

The DuctDown extends from 300mm above the ceiling to floor level.

When the fan comes on, in a well sealed wet area such as a toilet or bathroom area, a negative pressure is created in the room and air from the roof void is drawn down to replace that which is being drawn out. This low level ingress ensures that the room is air washed of odour and moisture efficiently and minimize noise transmission without disrupting air quality values in the rest of the house. The duct down vent can be installed into the stud wall in a new build or installed prod of the stud work in a renovation



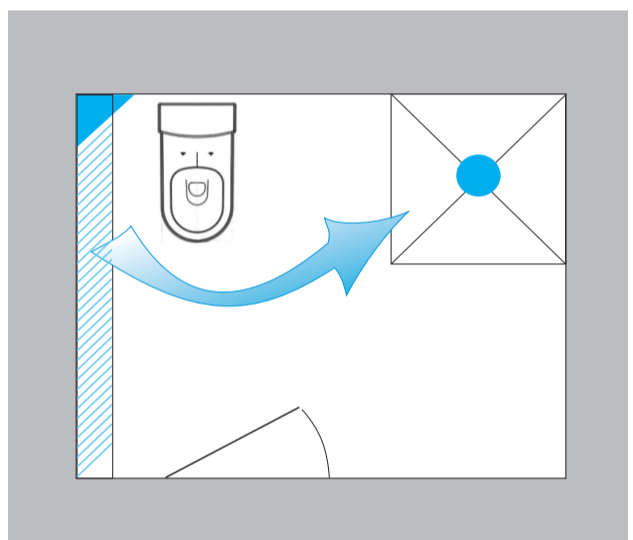
52 Overlord Place Acacia Ridge 4110 Queensland 04 2114 1105

The system items,

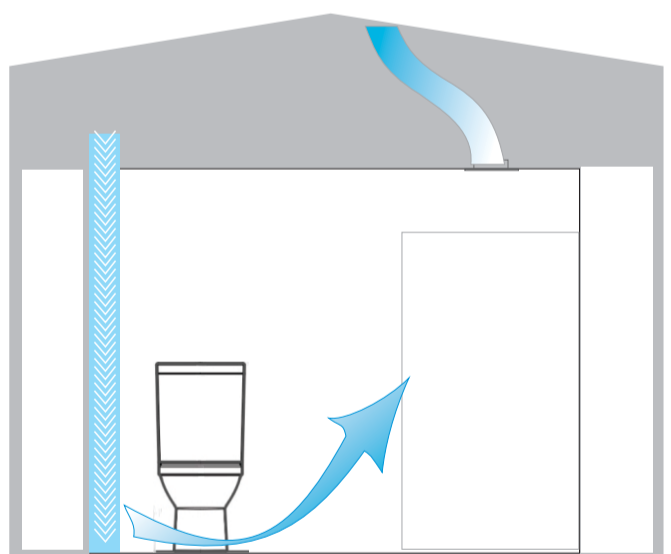
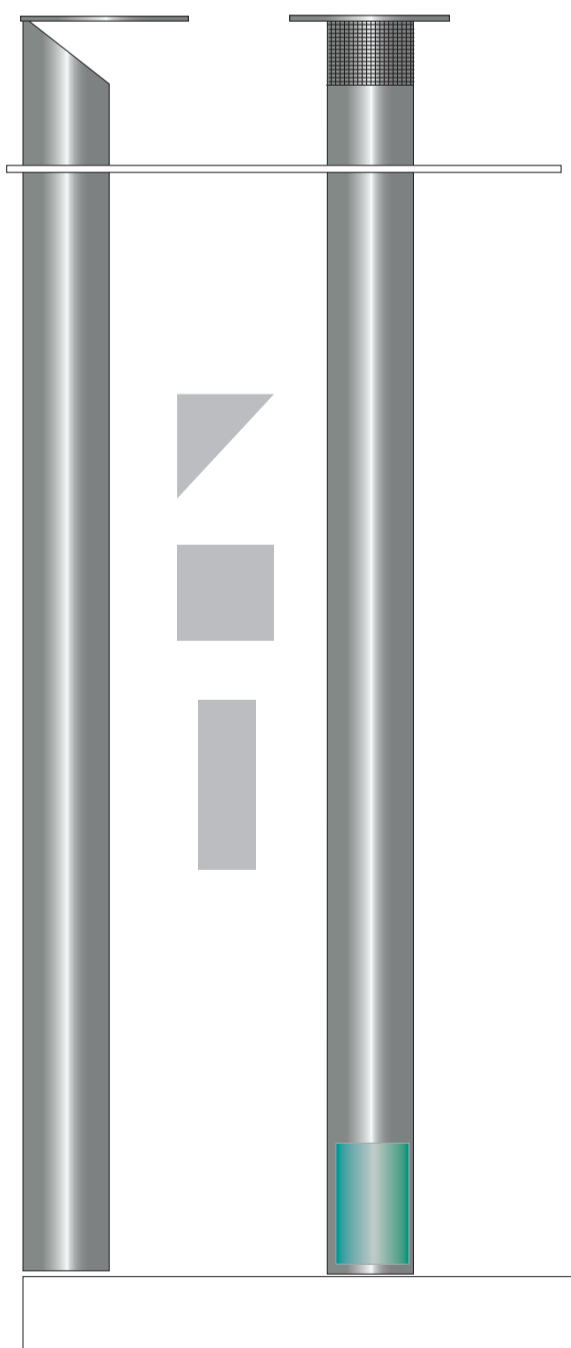
- 1 x wall or corner duct to length, from height of floor to ceiling + 300mm section shape to be nominated from triangular, square or rectangular
- 1 x 150mm inline exhaust fan
- 1 x fixed ceiling vent
- 2 metres of flexible duct

The installation, as per diagram, with the fan location being the reference point. The ingress duct should be as close to the toilet bowl as possible with the fan over the shower cubicle location. Wall duct to be installed prior to tiling the walls

The DuctDown is fabricated in stainless steel and has 12 x 12mm welded wire rodent mesh installed to the top side and a decorative perforated screen installed to the lower end



The blue shaded wall delineates where the ingress duct should be located in respect to fan location. Flexible fan duct should have only undulating curves to destination and no sharp bends to cupola on roof



The strength of the DuctDown allows any redressing, such as plasterboard or cement sheeting, to be adhered directly to the surface without the need for fasteners. Tiles can be adhered the surface with the correct adhesive. When in doubt Condor Kinetic should be contacted on 04 2114 1105 for any anomaly that may need clarification. Fabrication is full stainless steel. No plastic materials are used in Condor Kinetic products

Other DuctDown products are,

- Heat Transfer
- Air Conditioning

